



PROVOST'S BRIEFING University Faculty Senate

Tod A. Laursen
Provost and Senior Vice Chancellor
October 16, 2020

www.suny.edu





Preliminary Enrollment Survey Summary

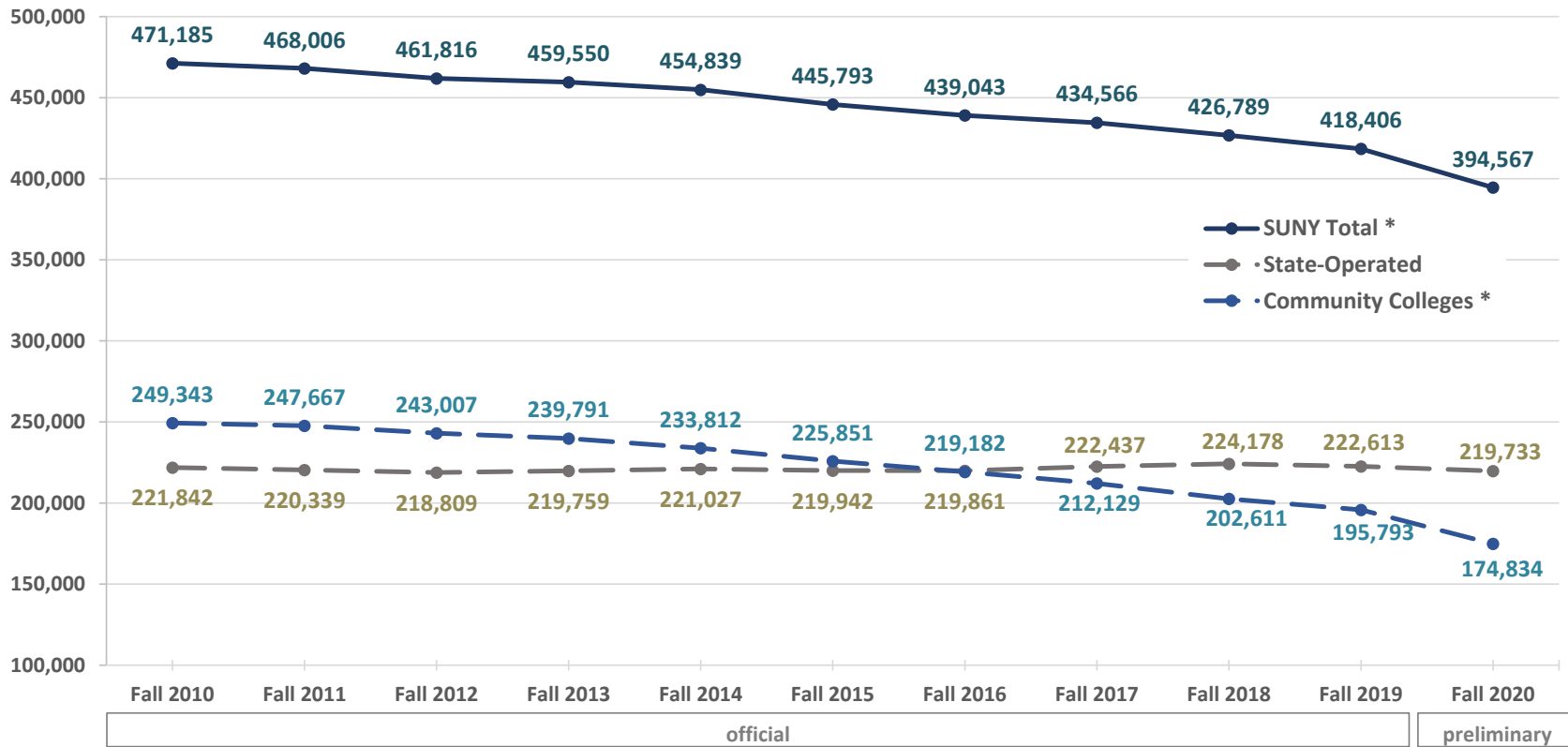
- **The annual Preliminary Enrollment Survey (PES) was completed by campuses, and collated by the System Institutional Research and Data Analytics team, as of 9/8**
- **The results are better than we expected last March and better than we predicted this summer based on a survey of students and application/deposit data**
- **A summary of the results (year on year from Fall 2019 actuals, by headcount) follows:**
 - SUNY Total: 394,567 (down 5.7% from Fall 2019)
 - SUNY State Operated Total: 219,733 (-1.3% from Fall 2019)
 - Doctoral Institutions: 112,651 (+0.3%)
 - Comprehensive Colleges: 80,971 (-3.2%)
 - Technology Colleges: 26,111 (-2.1%)
 - SUNY Community College Total: 174,834 (-10.7%)





Enrollment Update – Overall Trends

SUNY Overall Enrollment Trend: Official F10-F19 and Preliminary F20
(includes FT and PT, Undergraduate and Graduate)



* Official enrollment totals are slightly different than previously published ones due to a reporting inconsistency with Tompkins Cortland Community College that was addressed for this report.

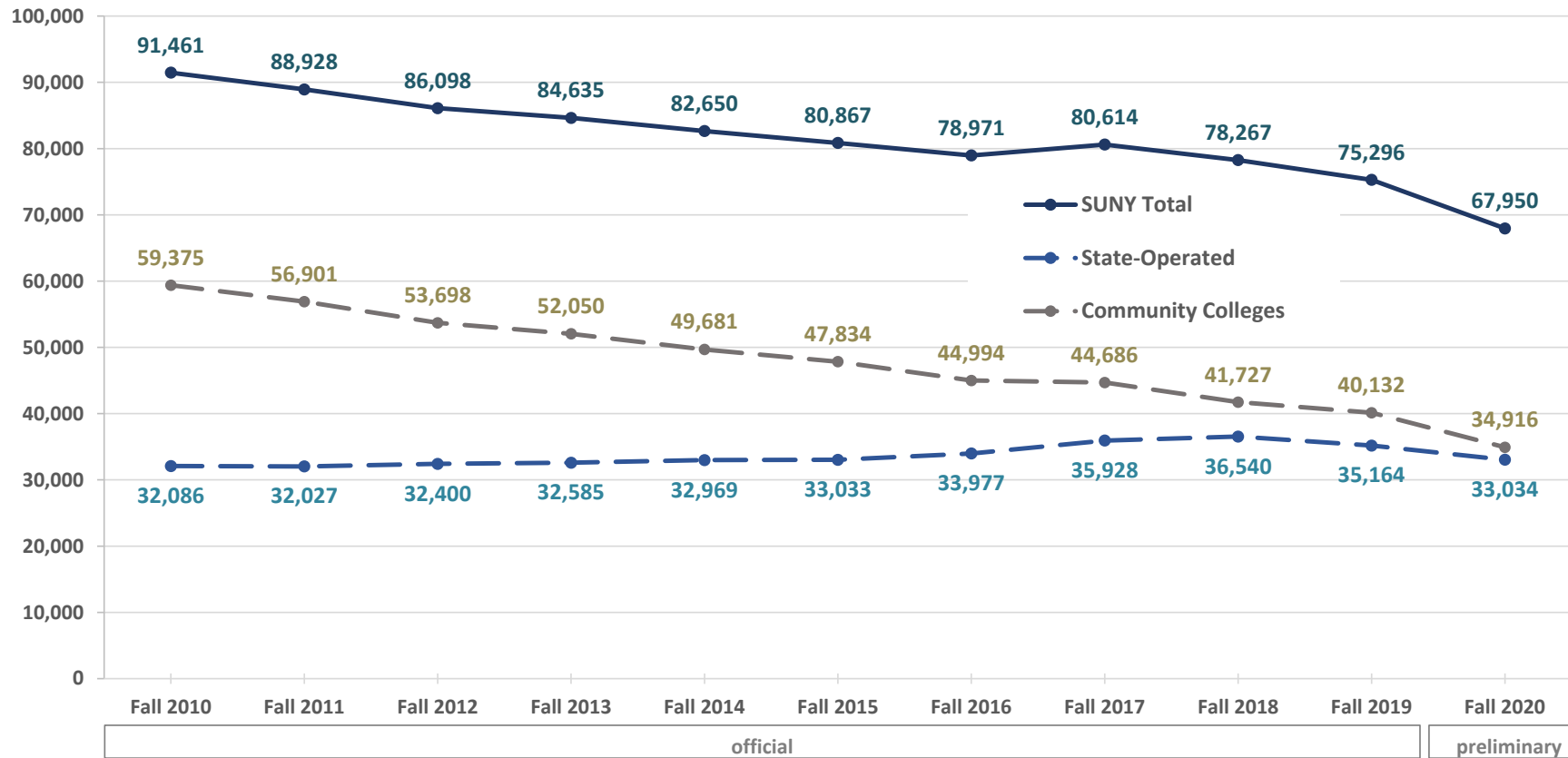
SUNY System Administration Office of Institutional Research and Data Analytics :: September 4, 2020
 Enrollment Survey (F20)

Sources: SUNY Data Warehouse (F10-F19) and Preliminary



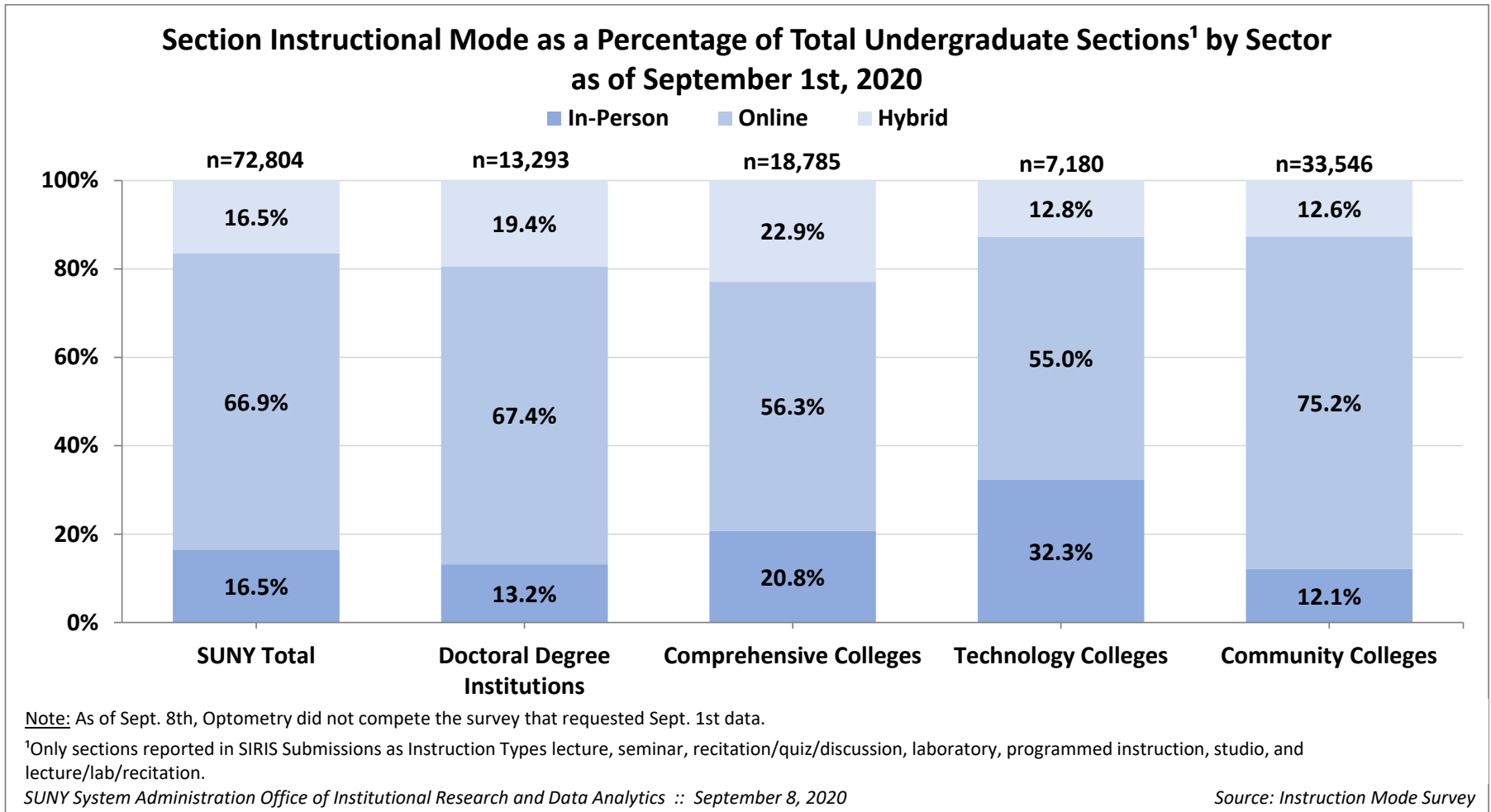
Enrollment Update – First-Time UG, Overall Trends

SUNY First-Time Undergraduate Enrollment Trend: Official F10-F19 and Preliminary F20





Academic Continuity – Modes of Instruction Survey 9/1/20





Academic Continuity – Strategies to Reduce Density

Academic Calendar Fall

- End F2F by Thanksgiving
- Eliminate breaks/holidays
- First week remote
- Changed semester start date
- IR snapshots 4x per term

Academic Calendar Spring

- Eliminate breaks/holidays
- Fully remote except for clinical and practicums prior to Feb 1
- F2F starts after Feb 1
- IR snapshots 4x per term

Course Scheduling

- Alternating attendance (i.e., AB)
- Extend scheduling classrooms to after 8pm
- Staggered start
- Increase to 6 days a week
- Increase time between classes

Employee/Staff

- Staggered start/report time
- Alternating days
- Continuing to work remotely
- Staggered breaks





Academic Continuity – NYSED Flexibilities

Flexibilities Enacted by the New York State Education Department (as of October 2020)

Guidance for New York State Colleges and Universities on Reopening for 2020-21
<http://www.highered.nysed.gov/pdf/NYSED-Reopening-Guidance-2020-21.pdf>

Flexibility	Spring / Summer 2020	Fall 2020	Spring 2021
Distance Education Format	Yes	Yes	Yes
Shortened Academic Calendar	NA	Yes	Yes
Alternate Clinical Experiences for Licensure-Qualifying Programs	Yes	Yes	TBD
Alternate Clinical Experiences for Educator Preparation Programs	Yes	Yes	Yes





SUNY Online Vision and Strategy

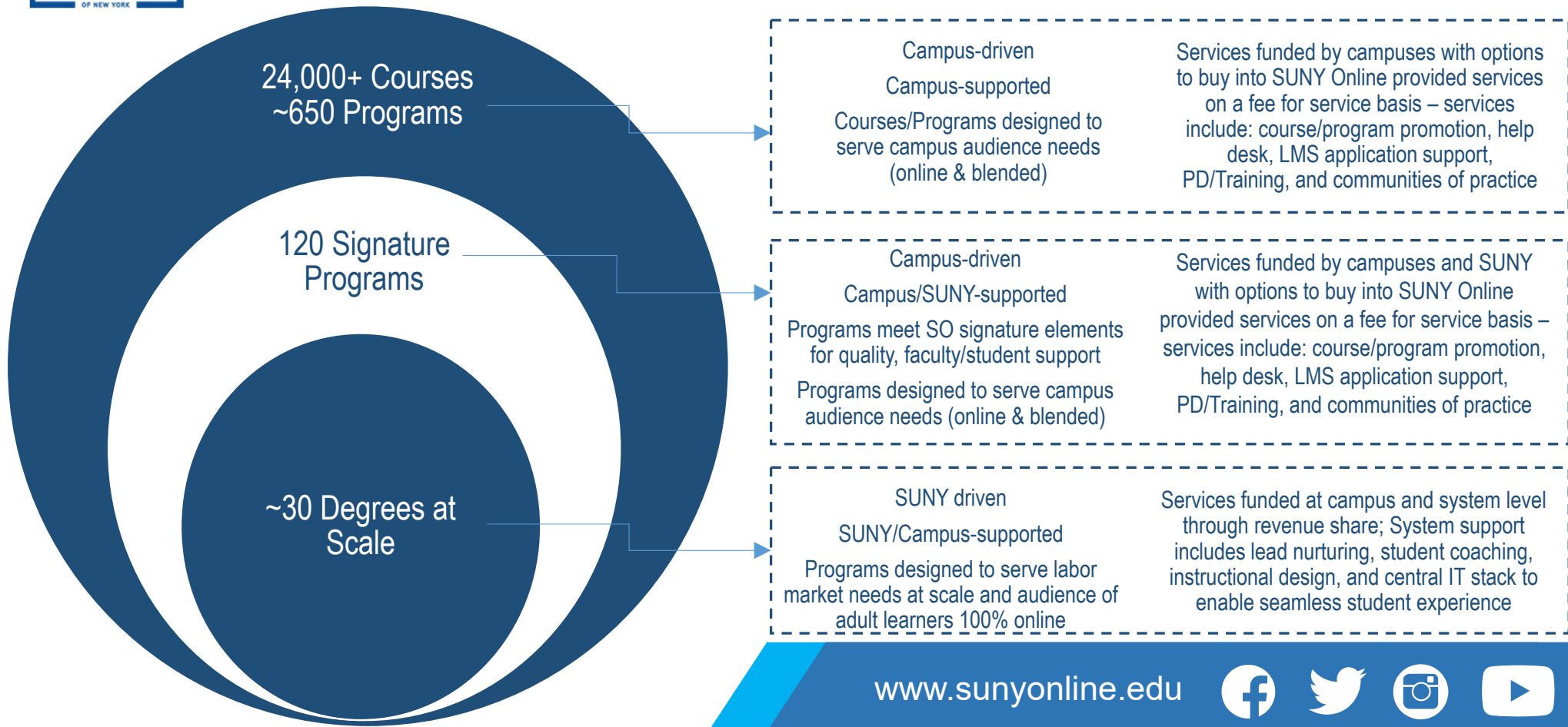
- **Continuing to drive new enrollments to and provide support services for *campus online education initiatives***
- **Serving the educational needs of *more 100% online adult learners* in NYS, across the US, and globally with:**
 - A suite of programs organized into seamless curricular pathways, responsive to student demand and job market needs
 - New instructional models for program and course design at scale
 - New models for student and faculty support at scale
 - Redesign of the promotion and recruitment funnel to maximize yield
 - A seamless student experience across campuses and technology solutions

www.sunyonline.edu





SUNY Online Education



www.sunyonline.edu





SUNY Online Education Progress

- Nine campuses, 22 programs, 6 pathways (Digital Security, Psychology, Health Care Mgmt., Business/Accounting, Data Science, Engineering)
- Online Advisory Group convened in May; five subcommittees
- To date, 391 course sections delivered via a common course template and partial implementation of common SUNY IT Solutions
- Validation and completion of financial model (revenue share to allow scalability)
- Program nominations for Fall 2021 yielded 147 programs, 88 specialty courses
- Spring 2021 marketing campaign planned. Target enrollment goals:

	<u>AY19-20 (Pilot)</u>	<u>AY20-21</u>	<u>AY21-22</u>	<u>AY22-23</u>	<u>AY23-24</u>	<u>AY24-25</u>	<u>AY25-26</u>
Target Enrollment	250	2,000	4,000	8,000	13,000	20,000	25,000
Actual (as of 8/25)	483	1,400	N/A	N/A	N/A	N/A	N/A





SUNY Online Education Partnership: USNCC

- **FLCC and MCC have partnered with Empire State College, University of Albany, and SUNY Maritime to submit proposals to the US Navy for their plans to establish a USN Community College**
 - The SUNY Consortium was qualified over the summer as education providers
 - USN plans to enroll up to 5,000 service members in AS and AAS programs offered fully online
 - The “SUNY Consortium” has submitted phase 1 proposals for five programs so far: military history, nuclear technologies, data analytics, cyber security 1 and cyber security 2
 - January 2021 will begin a pilot phase and kick-off will begin in Fall 2021
 - Notification of selection will be later this fall

www.sunyonline.edu





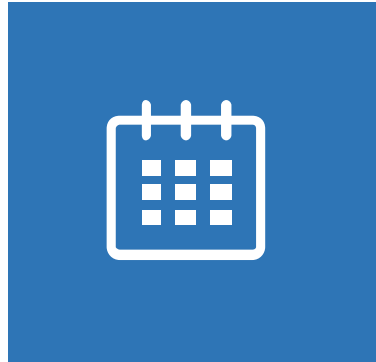
Open Educational Resources (OER) Fall 2020 Highlights

Accelerating Adaptive + OER Use

Fall-to-fall growth in faculty choosing to use the OER + adaptive learning platform, Waymaker occurred across sectors

- University Centers +475%
- University Colleges +189%
- Technology Colleges +478%
- Community Colleges +88%

All available platforms, OHM, Waymaker and OLI are now used in a SUNY Online offering



SUNY aprende español usando OER

Over 1,000 students in SUNY (primarily at Binghamton, Buffalo State College and SUNY Oneonta) are using Spanish I/II in Waymaker this Fall.

These courses were developed and authored by faculty at SUNY Oneonta are recognized for their excellence and rigor and are widely used nationally.

Aligning with Student Success

Rockland Community College's adoption and adaption of Waymaker College Success engaged faculty in newly created Guided Pathways schools to tailor content specific to their students.

Monroe and Onondaga Community Colleges are utilizing OER in the Online Homework Manger for co-requisite math courses.



OER for Math at Scale

Across SUNY the use of OER in math courses continues to have the heaviest use. 18,000 SUNY students using Online Homework Manger (OHM) this Fall

- Westchester Community College doubled use since Spring 2020
- Dutchess Community College increased use 55% since Spring 2020
- Stony Brook University has tripled use since Fall 2019





COVID Impact on Employees Survey (August 2020)

SELECT HIGH-LEVEL PRELIMINARY FINDINGS

- 89% of respondents reported that they started working remotely or started splitting time between on-site and remote
- 73% of respondents agreed that they were able complete work responsibilities at the same level as on-site.
- 82% of respondents agreed that their campus leadership has done a good job helping employees adapt to the COVID-19 induced changes
- 84% of respondents agreed that campus leadership showed care and concern for employees





COVID Impact on Employees Survey (August 2020)

SELECT HIGH-LEVEL PRELIMINARY FINDINGS

- Nearly 3/4 or more of faculty respondents agreed that they received effective training to teach remotely (74%), technical support to transition to remote instruction (82%) and were satisfied with the course delivery platforms (80%)
- Less than half of faculty respondents (42%) reported they were comfortable with returning to in-person instruction in Fall 2020
- 89% of faculty respondents reported they were confident in their ability to teach online/remotely in Fall 2020





Q & A

www.suny.edu

