

**University Faculty Senate
Provost Report**

October 20, 2023





Strategic Research Investment (STRIVE) Task Forces: Fall 2023

- AI
- Biotechnology, Biomanufacturing, and Bioengineering
- Microelectronic Packaging



SUNY DLE Project Update

Kim Scalzo, Interim Sr. Assoc. Provost,
Digital Innovation and Academic Services
October 20, 2023



Implementation Plan 4 Cohorts over 2 Years

We are here!



	2022			2023		
	Jan. - Apr.	May - Aug.	Sep. - Dec.	Jan. - Apr.	May - Aug.	Sep. - Dec.
Cohort 1	Phase 1	Phase 2	Phase 3			
Cohort 2		Phase 1	Phase 2	Phase 3		
Cohort 3			Phase 1	Phase 2	Phase 3	
Cohort 4				Phase 1	Phase 2	Phase 3

Phase 1 : Planning and IT/Academic Prep (Includes Initial Training)

Phase 2: Pilot - Early Adopter Faculty (Includes continued Training and aligned with the start of a semester)

Phase 3: Production Cutover "Go Live" - All Courses/Faculty (Aligned with the start of a semester)



Cohort 1: Kick-off Feb 2022 (178,395 students; 14,715 faculty)



Cohort 2: Kick-off May 2022 (42,311 students; 3,313 faculty)



Cohort 4: Kick-off Dec 2022 (24,915 students and 1,995 faculty)



Cohort 3: Kick-off Aug 2022 (55,776 students; 4,426 faculty)



SUNY WKH#WDWH#QIYHUVI\#R I#HZ #RUN



SUNY DLE – Shared Brightspace Environment

SIS Data

Campus Ownership of SIS System and Source Data

SUNY Support with SICAS, OIT, and SUNY Online

- Primary API Transmission of SIS Data to SUNY Data Hub -> Transmission to Brightspace.

Authentication

Campus Ownership of Active Directory System & Multifactor Authentication

SUNY Support with OIT and SUNY Online

- Federated Authentication utilizing Global ID.
- Global ID set as an Active Directory attribute. This makes single accounts for students and faculty possible.

LMS / DLE Core

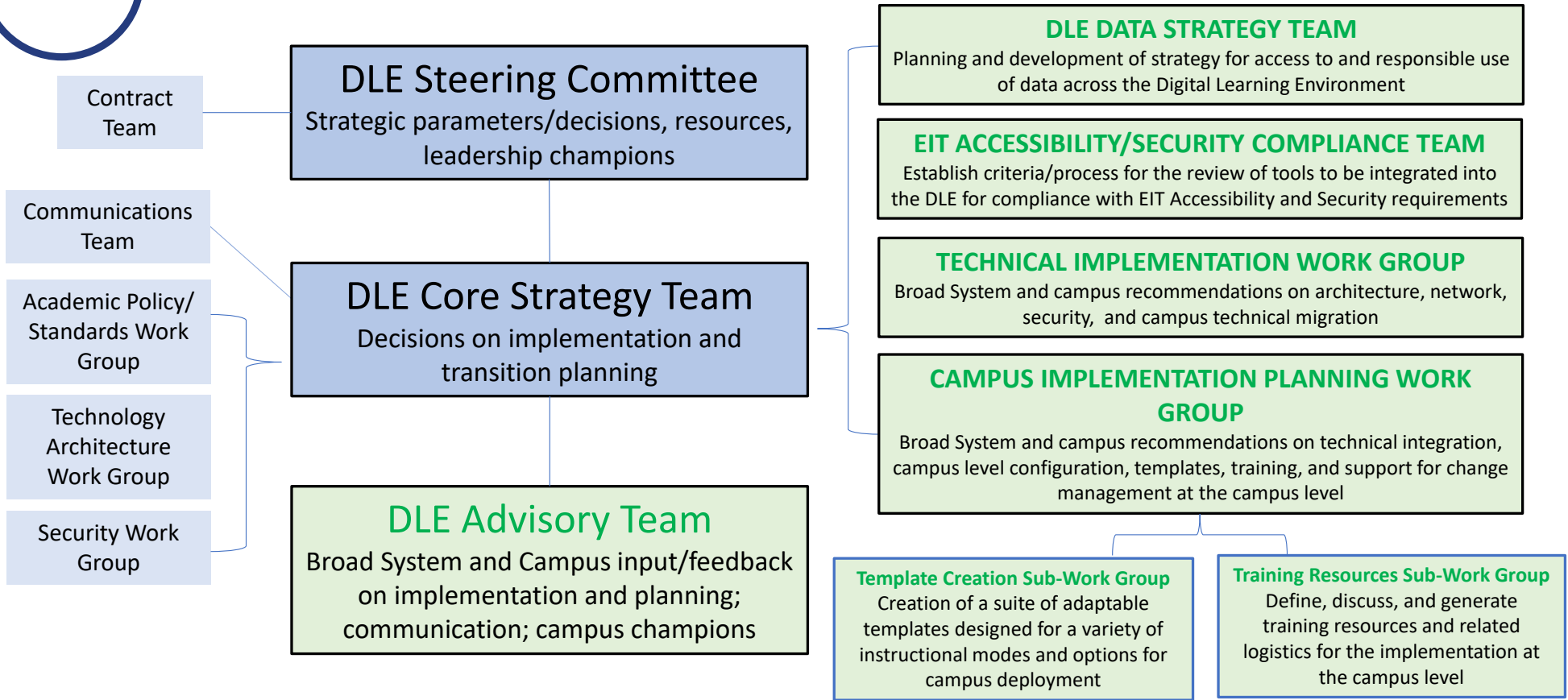
Campus Admins, 3rd Party Tool Contracts, Expanded Accessibility/Security

SUNY Support with SUNY Online and OIT

- Administration: Campus/SUNY Configuration
- 3rd Party Tools: Campus purchase and request of implementation by SUNY, Brightspace EIT Accessibility/Security by SUNY, Extended EIT Accessibility/Security/Accommodation by Campus
- Technical Faculty/Student Support: Internal Campus Support, SUNY Online Helpdesk/ SUNY Online Application Services
- Suite of Templates: Campus/SUNY Collaboration
- Training / Resources: Campus/SUNY Collaboration



SUNY DLE Project Structure - Implementation



<https://dle.suny.edu/meet-the-teams/>

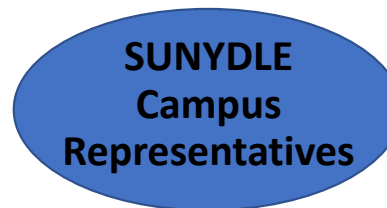
SUNY WKH#WVDWH#Q IYHUVI\#R I#QHZ #R UN



DLE Post-Implementation Governance Structure:

General Consensus

Two Groups



Charge

- Surface issues and needs
- Provide input and feedback
- Communication to/from campuses
- Campus representation and advocacy

All Campuses Represented



Charge

- Prioritize requests from campuses
- Identify and prioritize items for SUNY DLE and Brightspace enhancement
- Recommend new procurements/new product implementation
- Recommend timing for updates/upgrades

Campus Reps and Leadership Roles



Post-Implementation Governance Structure

SUNY DLE Council Membership

• Campus Members * (voting)

- UFS President or designee
- FCCC President or designee
- SA President or designee
- CAO – Appointed by CAO Exec group **
- CIO – Appointed by CIO Exec group **
- CFO CC – Appointed by CCBOA
- CFO State Ops – Appointed by SUBOA
- Campus Representatives – Appointed by DOODLE ***

• System Members (staff support/policy guidance)

- Snr. Assoc Provost, Digital Innovation & Acad Svcs (Chair)
- Snr. Assoc. Provost, Academic Affairs
- Director of Tech Strategy and Integration, SUNY Online
- Director of Student Admin Systems, OIT
- Executive Director, SICAS Center
- Director of Data Innovation Strategy, OREID
- Chief Information Security Officer, OIT
- Executive Director, SUNY Online
- SUNY Online Program Manager, SUNY CPD
- Associate Vice Chancellor for Finance and Business, Budget

* Expectation that all reps bring input and report back from their constituency groups

** Need to make sure that between CAO and CIO rep one is from a CC and one is from a State Op

*** Must come from DLE Campus Representatives and include at least a mix of reps from DOODLE, T&L Ctr Dir, ID, and LMS Admin



Collaboration / Partnership for Change Management

THANK YOU ALL!!!!

Which SUNY Are You?

SUNY Online

SUNY OER services

SUNY OIT

D2L

SUNY ITEC | Information Technology Exchange Center

SUNY Center for Professional Development

SUNY SICAS

SUNY WKH#/WDWH# QIYHUVI\#R I#QHZ #R UN